

Instructions for Bar Nose Steering



Read these instructions before starting to use this equipment.



The manual contains safety instructions.



Warning! Failure to follow the instructions can cause serious injury.

The bar nose steering must only be mounted on Logosol's electric saw unit or on the chainsaw carriage for the Logosol Sawmill. In this manual, these machines will be called cutting units.



Description:

The bar nose steering is available for Logosol's electric saw unit and the Logosol Sawmill's chainsaw carriage. In its original design the electric saw's bar nose steering is compatible with guide bars of the lengths 40-75 cm. The chainsaw's bar nose steering is compatible with guide bars of the lengths 0-63 cm. Parts that enables you to use a 90 cm long guide bar together with the steering are available as accessories for both the electric saw and the chainsaw.



Be aware that accidents with dangerous machines most frequently happen when the operator e.g. is removing sawdust or chips, or is trying to correct a small disturbance. When an operational disturbance occurs, turn the machine off immediately. Such a stop can seldom be seen on the finished product. Always disconnect the machine from the electricity supply before performing any servicing or maintenance.

Document name: svärdstoppstyrning_manual_uk_070510
Swedish version revised 2006-11-29
Manual art.nr: 9999-000-9999
Text: Mattias Byström
Translation: Anna Olsgren Byström

LOGOSOL

Industrigatan 13 SE-871 53 Härnösand

Tel: 0046 611-182 85 Fax 0611-182 89

www.logosol.se

Safety Instructions



“ WARNING! “. Pay extra attention when this symbol appears in the text. If used incorrectly, the equipment can cause serious injury.



For your own safety, do not begin working with the machine before having read and understood the entire manual. Also read the manual and safety instructions for the cutting unit.



Cutting tools: Never place your hands on or past the guide rail.



This symbol means “PAY ATTENTION”. Pay extra attention when this symbol appears in the text. This symbol is always followed by an admonition or warning.

⚠ Risk that the chain breaks. Risk of serious injury. Risk of damaging the chain and the magnet.

If you notice that the bar nose steering runs the risk of touching the log you are sawing, you must stop sawing immediately and turn off the cutting unit. There is a great risk that you damage both the chain and the bar nose steering if the steering is pushed out over the cutting chain by the project log.

❗ When fitting or adjusting the bar nose steering, the electric saw **must not** be connected to the electricity supply / the chainsaw **must** be turned off.

❗ **Before connecting the electricity or starting to saw, ensure that:**

- the bar nose steering is mounted correctly and the screws are firmly tightened.
- the drive belt of the electric saw is properly tensioned and the guide bar is fixed properly so that it cannot move laterally.
- the magnet is centred on the bar nose and is placed at least 5 mm from the cutting chain.
- the magnet holder mount with the magnet holder is positioned at least 10 mm from the cutting chain.
- the lower edge of the bar holder mount reaches at least 5 mm below the lower edge of the chain.
- the cutting unit is correctly pushed onto the guide rail of the Logosol Sawmill.
- the cutting equipment is correctly fitted: the cutting chain is turned in the correct direction and is properly tensioned, and the guide bar is correctly fitted in its attachment.
- no one but the operator is within the stipulated safety distance.

❗ **Before start, ensure that:**

- the bar nose steering will not touch the log that is to be sawn. Pay extra attention if the log has a flare at the root end.
- no one but the operator is within the stipulated safety distance.

❗ **After each work shift:**

Clean the cutting unit and the bar nose steering.

Assembly

- ❗ Adjust the sawmill according to its manual and read the instructions below before you begin the assembly.

Bar nose steering for electric saw:

1. Fit the magnet (9) under the magnet holder (2) by fastening it with a screw in the smallest hole in the holder. (Screw M4x8, Washer M4)
2. Fit the magnet holder mount on the in- or the outside of the protective bail on the cutting unit (*1).
3. Fit the magnet holder (2) centred in the slots in the magnet holder mount (1). (Two screws M6x16, two washers, two M6 lock nuts)
4. Mount the guide bar that is going to be used on the electric saw.
5. Push the protective bail together (*2) so that the magnet sticks onto the bar nose's centre, and move the protective bail vertically until it is at about the right height. The lower edge of the magnet holder mount should be 5-15 mm below the bar.
6. Fit the strut (5): Place the strut's U-shaped notch over the upper edge of the protective yoke, and push down the split end over the protective bail. Knock the notch down over the protective yoke, using a rubber mallet. Insert the screw through the holes in the split. Tighten the nut on the screw, but do not screw it so tight that the strut becomes deformed. (One screw M6x40, one washer, one lock nut M6)
7. Refasten the parts of the protective bail. Sometimes it can be necessary to drill new holes for the screws that lock together the two parts of the protective bail.
8. Tweak the height of the bar nose steering by pushing the magnet holder vertically in the slots of the magnet holder mount. The guide bar should be parallel with the log beds.
9. Tighten all screws.

- ❗ Make sure that the distance between the magnet and the chain is at least 5 mm, and the distance between the magnet holder mount and the chain is at least 10 mm. The lower edge of the magnet holder mount should reach at least 5 mm below the guide bar. Make sure that all screws are tightened.

*1: 40-50 cm guide bar: inside; longer bars: outside.

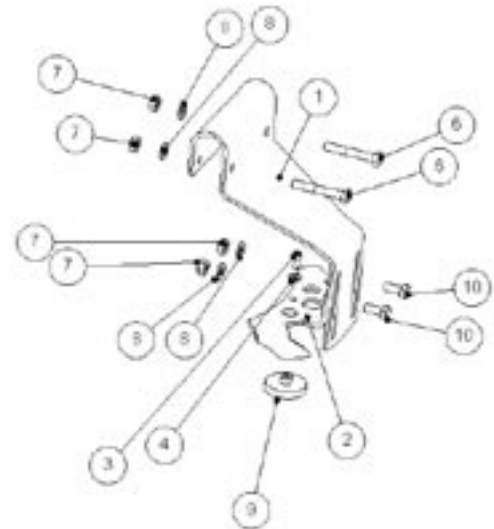
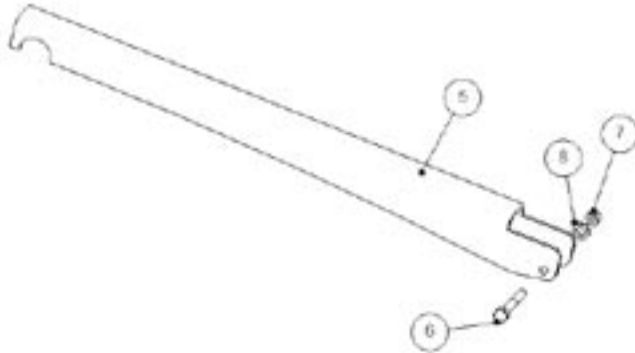
*2: The two parts of the protective bail can be difficult to push together. Sand the inside of the pipe or cut off a couple of centimetres from the pipe ends of the outer part of the protective bail.

Bar nose steering for chainsaw:

1. Remove the mount for the chain guard (4510-720-3000).
2. Fit the magnet holder mount (11) on the inside of the chain guard (4510-723-4809). (One screw M8x120, one M8 lock nut, two M8 washers)
3. Fit the magnet (9) centered in the slot under the magnet holder (12). (Screw M4x8, Washer M4).
4. Fit the magnet holder (11) to the magnet holder mount (10). (Two screws M6x14, two washers, two M6 lock nuts.)
5. Mount the chainsaw, equipped with the guide bar you are to use, on the carriage.
6. Push the mount for the chain guard back into position, and adjust the magnet so that it is centred on the bar nose. Put the magnet in position by moving it in the slot where it is fitted. If you cannot make it centred by only using the slot, turn the magnet holder mount.
7. Adjust the height of the bar nose steering by pushing the magnet holder vertically in the slots in the magnet holder mount. The guide bar should be parallel with the log beds.
8. Tighten all screws.

- ❗ Make sure that the distance between the magnet and the chain is at least 5 mm, and that the magnet holder mount is at least 10 mm from the chain. Make sure that all screws are tightened.

Components



Components, bar nose steering for electric saw unit:

Pos:	Component:	Quantity:	Art. no:
1	Magnet holder mount	1	9999-000-9999
2	Magnet holder	1	9999-000-9999
3	Screw M4x8	1	9999-000-9999
4	Washer M4	1	9999-000-9999
5	Strut	1	9999-000-9999
6	Screw M6x40	3	9999-000-9999
7	Lock nut M6	5	9999-000-9999
8	Washer M6	5	9999-000-9999
9	Rubber covered magnet	1	9999-000-9999
10	Screw M6x16	2	9999-000-9999

Components, bar nose steering for petrol chainsaw:

Pos:	Component:	Quantity:	Art. no:
	Screw M4x8	1	9999-000-9999
	Washer M4	1	9999-000-9999
9	Rubber covered magnet	1	
10	Magnet holder mount	1	9999-000-9999
11	Magnet holder	1	9999-000-9999
	Screw M6X14	2	9999-000-9999
	Lock nut M6	1	9999-000-9999
	Washer M6	1	9999-000-9999
12	Screw M8X120	2	9999-000-9999
	Lock nut M8	1	9999-000-9999
	Washer M8	2	9999-000-9999

